

2019 1

2019 3 31

2019 4 22

§ 1

2019 4 18

2019 1 1 3 31

§ 2

	-
	000822
	-
	-
	2014 11 14
	14,857,117.31

	300 × 50% + × 50%

§ 3

3.1

	2019 1 1	2019 3 31
1.		772,189.16
2.		2,837,243.03
3.		0.188
4.		13,225,121.01
5.		0.890

1

2

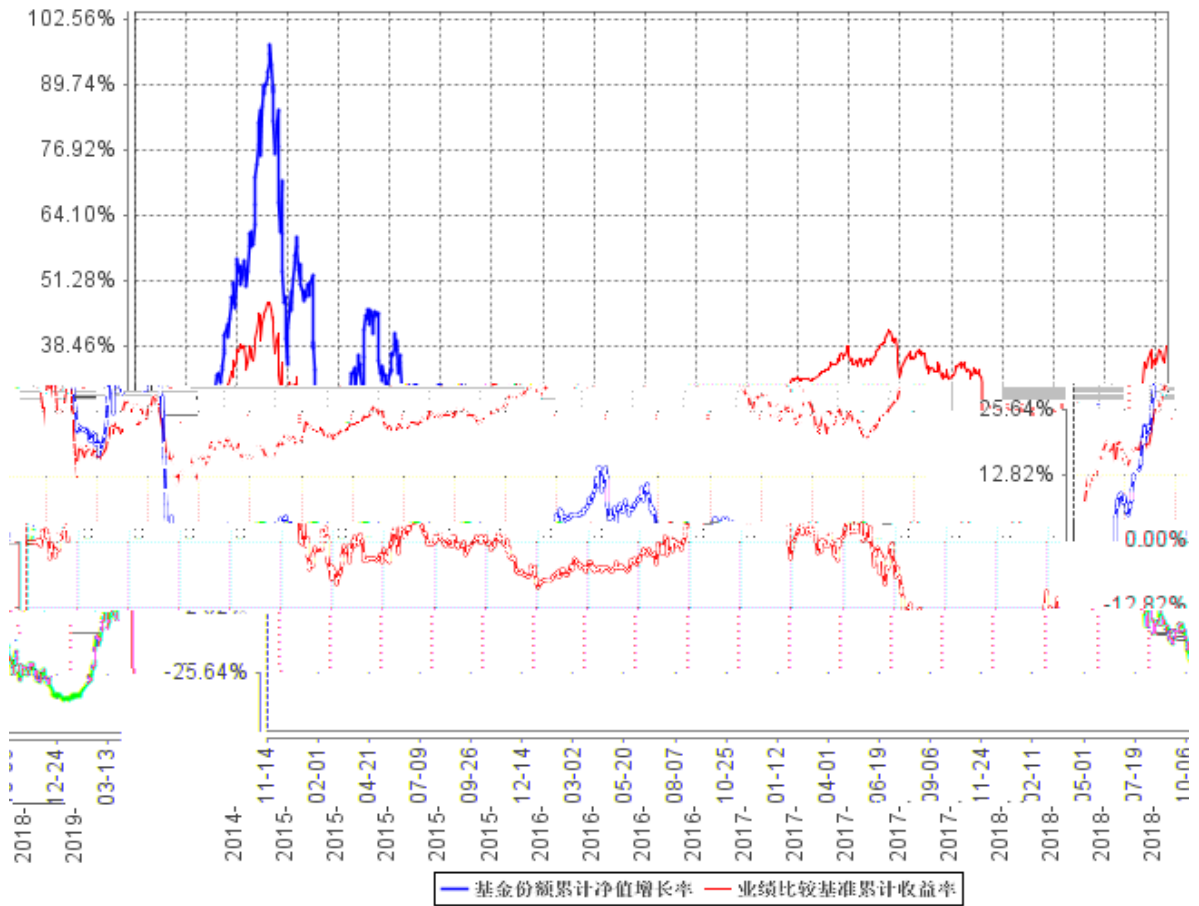
3.2

3.2.1

	26.60%	1.53%	14.33%	0.77%	12.27%	0.76%

3.2.2

基金份额累计净值增长率与同期业绩比较基准收益率的历史走势对比图



1 2014 11 14 2014 11 14 2019

3 31

2 (

)

0%-95%

0%-3%

10

20%

95%

5%

3.3

§ 4

4.1

2014 11
14

4.3

4.3.1

4.3.2

5% 0

4.4

A

2018

2018

A

4.5

0.890 26.60%

14.33%

4.6

2019 1 2 5000 58

§ 5**5.1**

			%
1		12,370,634.08	87.85
		12,370,634.08	87.85
2		-	-
3		-	-
		-	-
		-	-
4		-	-
5		-	-
6		-	-
		-	-
7		1,521,479.74	10.80
8		189,755.40	1.35
9		14,081,869.22	100.00

5.2.1

			(%)
A		1,453,739.40	10.99
B		-	-
C		8,766,776.68	66.29
D		-	-
E		-	-
F		-	-
G		-	-

5.10.2**5.10.3****5.11****5.11.1****5.11.2****5.11.3**

1		28,675.45
2		149,746.78
3		-
4		398.77
5		10,934.40
6		-
7		-
8		-
9		189,755.40

5.11.4**5.11.5**

§ 6

	15,207,865.90
	331,643.86
:	682,392.45
"-"	-
	14,857,117.31

§ 7

7.1

	3,724,525.11
/	0.00
/	0.00
	3,724,525.11
%	25.07

7.2

§ 8

8.1

20%

20%

8.2

§ 9

9.1

1

2

3

4

5

6

7

9.2

9.3

2019 4 22